

Y Pwyllgor  
Cynllunio

Planning  
Committee

**20.10.2020**

**RHANBARTH  
Y DWYRAIN**

**AREA  
EAST**



**EICH CYNGOR arleinamdani**  
[www.sirgar.llyw.cymru](http://www.sirgar.llyw.cymru)

**YOUR COUNCIL doitonline**  
[www.carmarthenshire.gov.wales](http://www.carmarthenshire.gov.wales)

Y Pwyllgor  
Cynllunio

Planning  
Committee

**CEISIADAU YR  
ARGYMHELLIR EU  
BOD YN CAEL EU  
CYMERADWYO**

**APPLICATIONS  
RECOMMENDED  
FOR APPROVAL**



**EICH CYNGOR arleinamdani**  
[www.sirgar.llyw.cymru](http://www.sirgar.llyw.cymru)

**YOUR COUNCIL doitonline**  
[www.carmarthenshire.gov.wales](http://www.carmarthenshire.gov.wales)

Y Pwyllgor  
Cynllunio

Planning  
Committee

E/38200

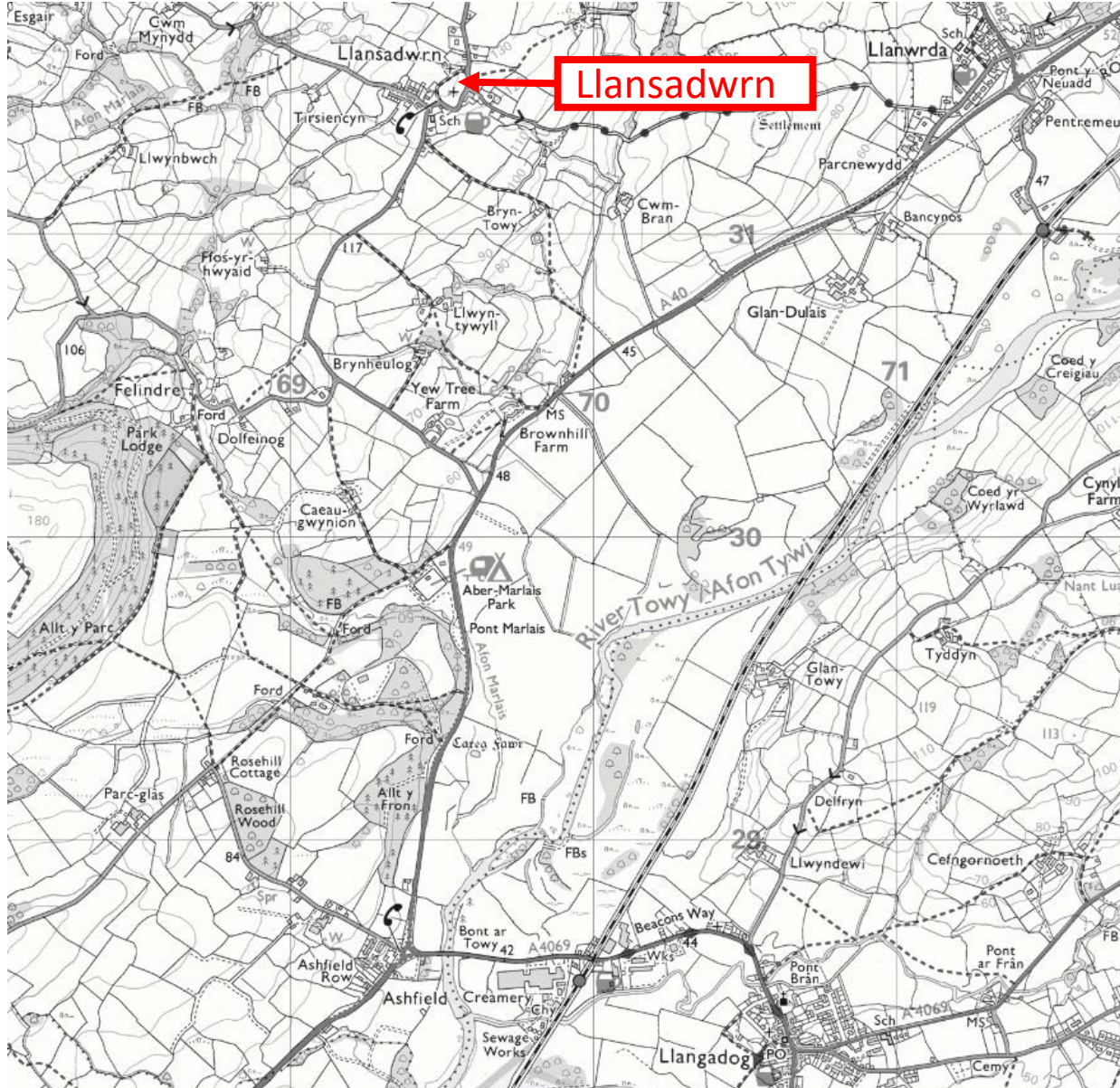


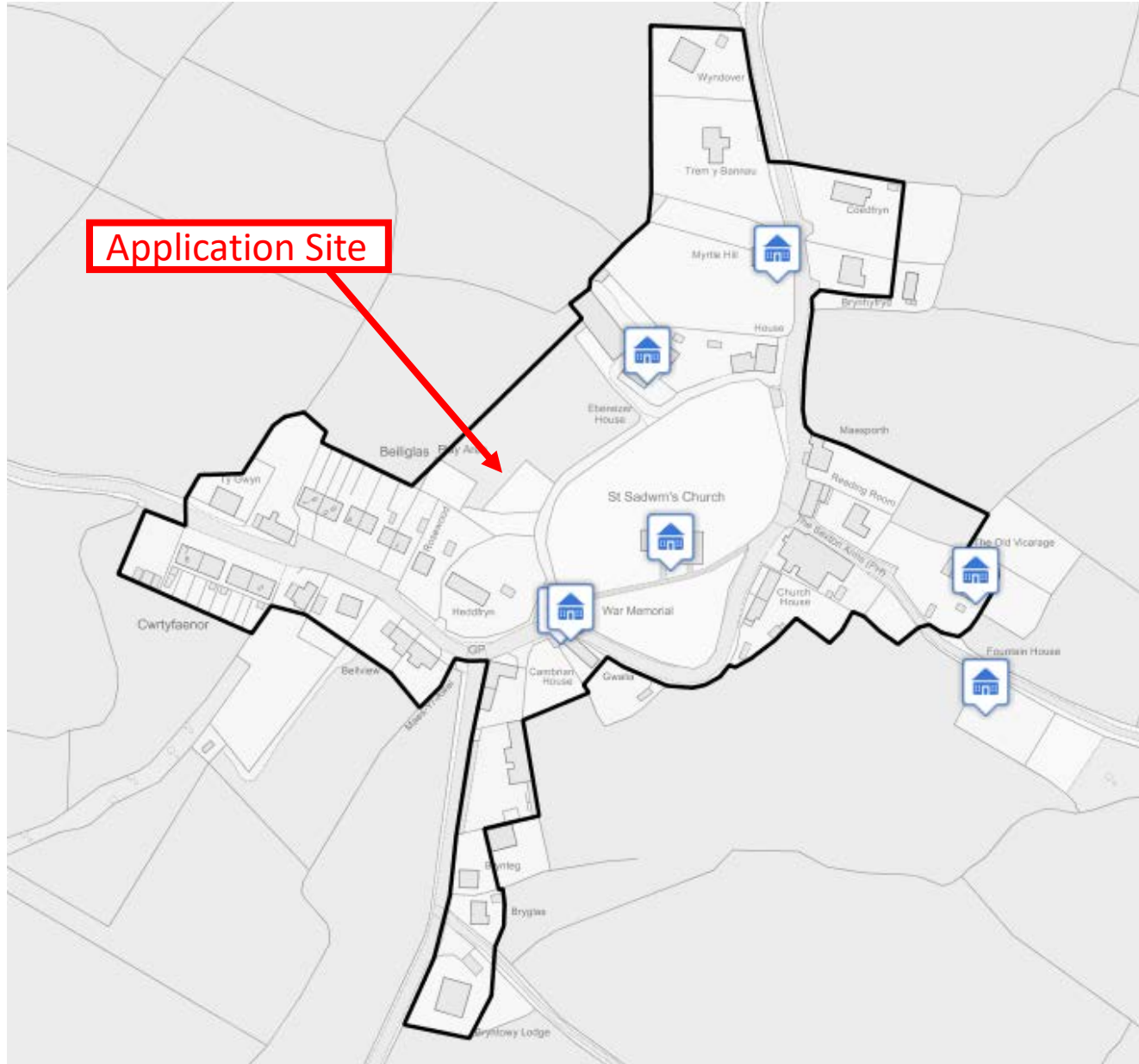
EICH CYNGOR **arleinamdani**  
[www.sirgar.llyw.cymru](http://www.sirgar.llyw.cymru)

**YOUR COUNCIL doitonline**  
[www.carmarthenshire.gov.wales](http://www.carmarthenshire.gov.wales)

# E/38200

# LOCATION PLAN







# E/38200

# AERIAL PHOTO





# E/38200

# AERIAL PHOTO



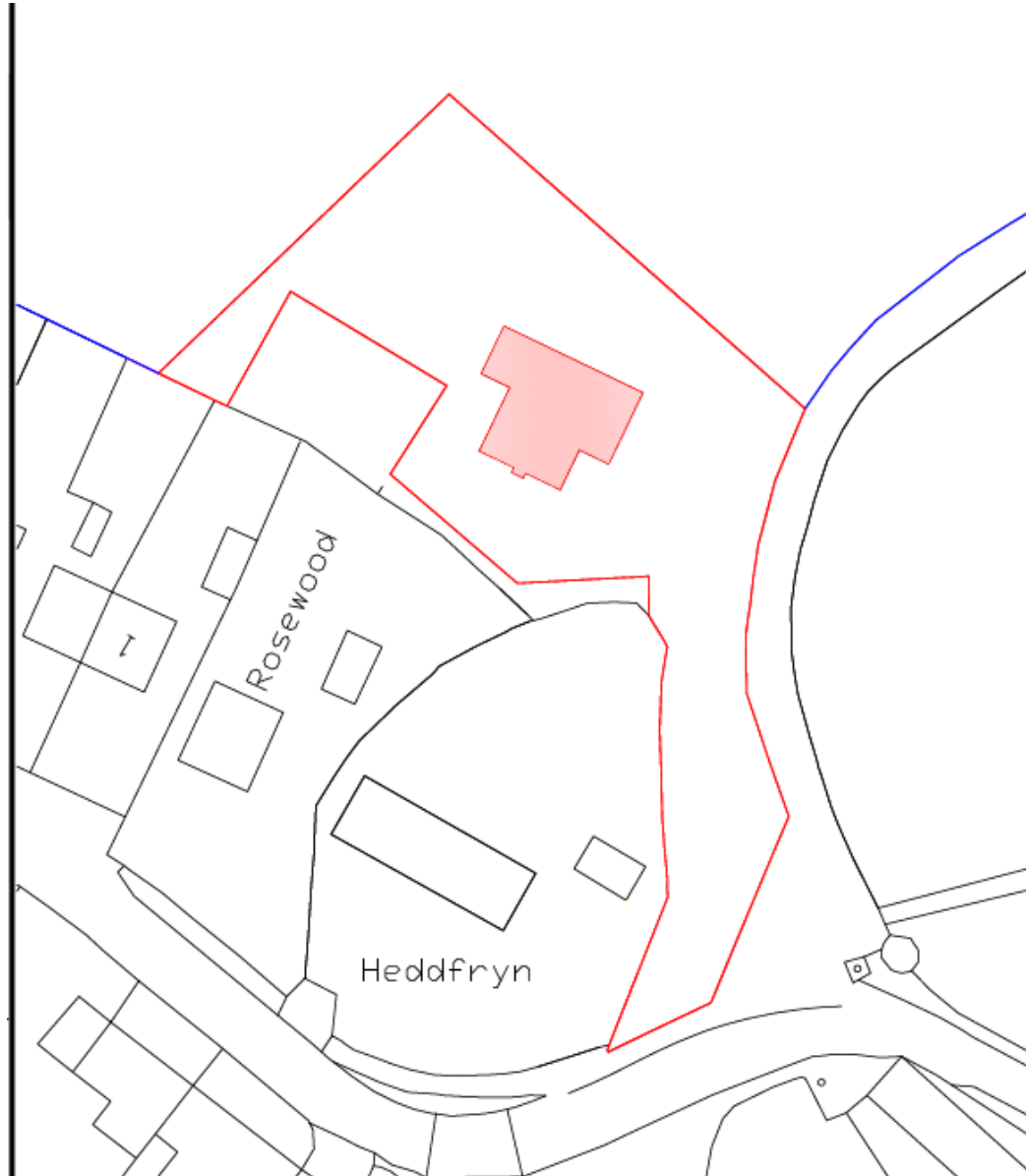
50





# E/38200

# SITE PLAN





# E/38200

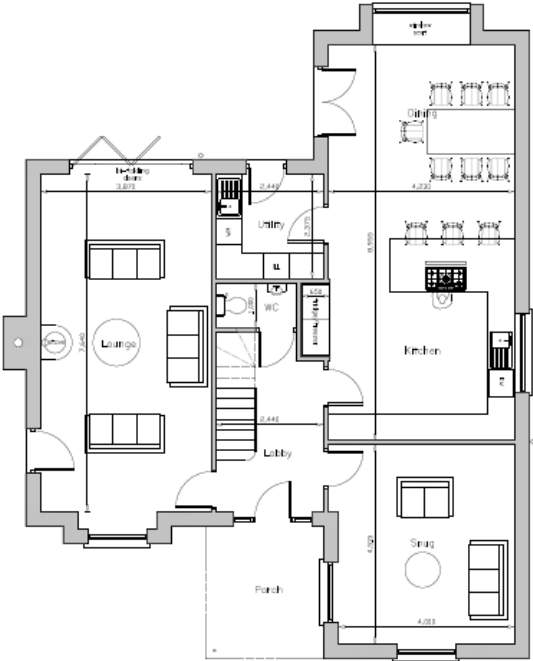
# SITE PLAN



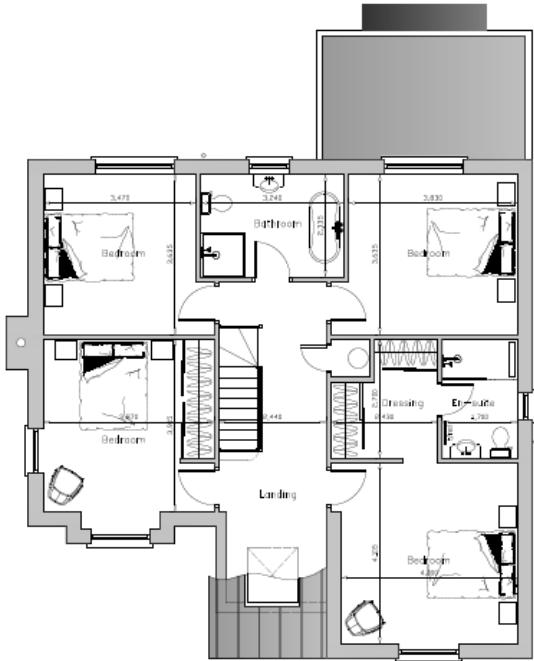


# E/38200

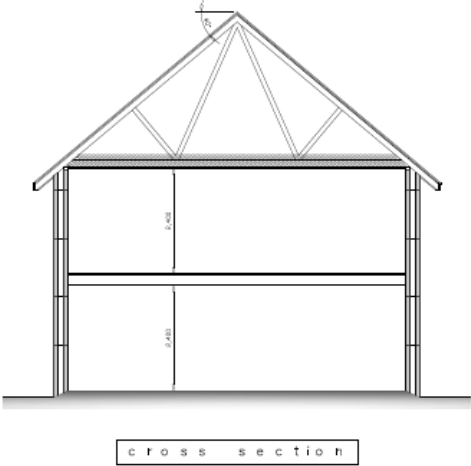
# LAYOUT PLANS



ground floor plan



first floor plan



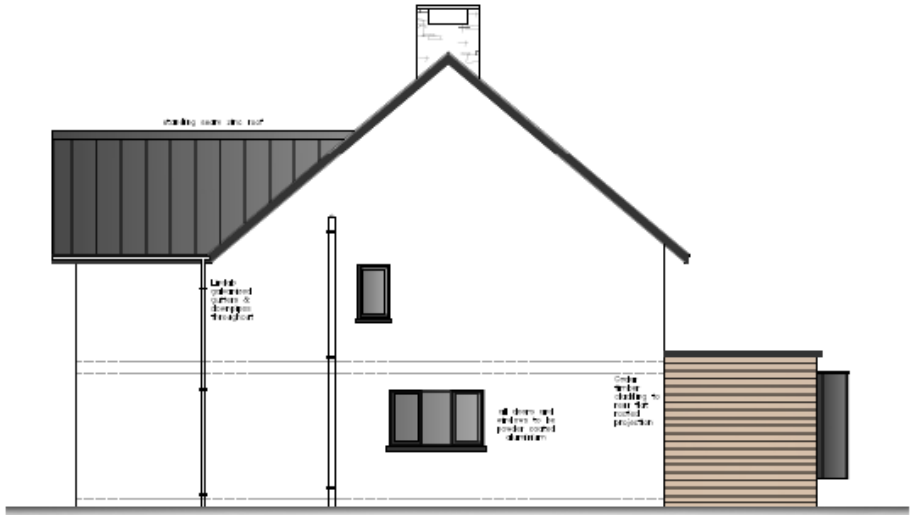
cross section

# E/38200

# ELEVATION PLANS



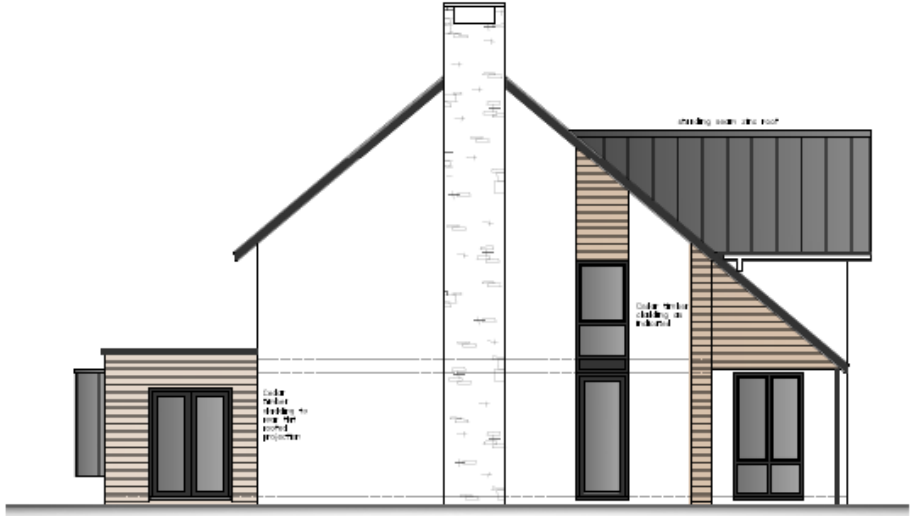
south east facing elevation



north east facing elevation



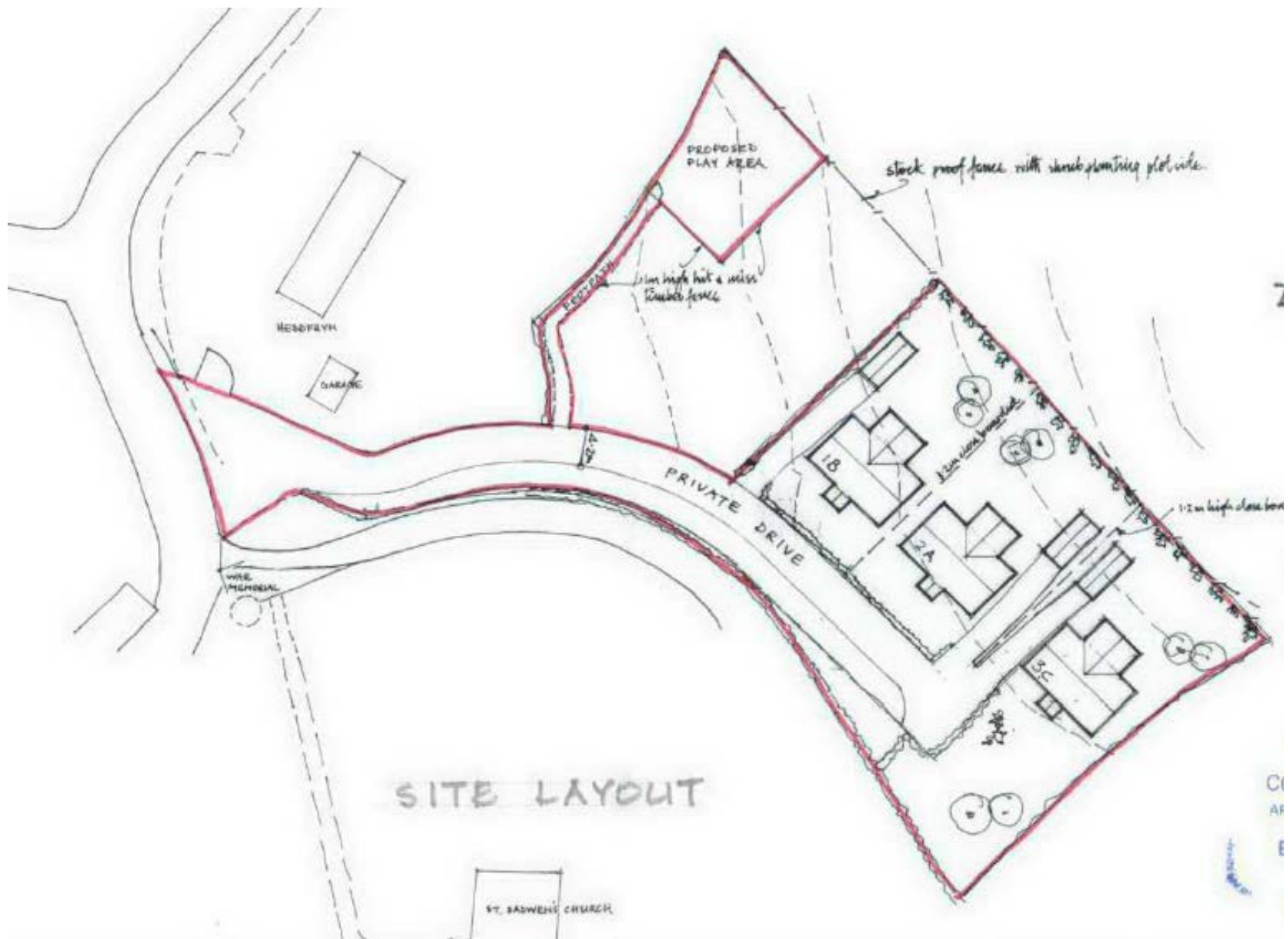
north west facing elevation



south west facing elevation

# E/38200

## HOUSE LAYOUT APPROVED ON ADJ LAND





# E/38200

## HOUSE DESIGN APPROVED ON ADJ LAND



FRONT ELEVATION TYPE A

REAR ELEVATION

FRONT ELEVATION TYPE B

FRONT ELEVATION TYPE C

SYMBOLS:—

- ROOF - METAL SHEET IRON ROOF
- WALLS - WHITE EXTERIOR PAINTED INSIDE
- W/CS - WHITE PAPER, STAINLESS
- FLUERS & FINISHING
- TERRACE - WHITE WASHED



SIDE ELEVATIONS TYPES A AND C



SIDE ELEVATIONS TYPE B

1/4" = 1'-0" 1/2" = 1'-0" 3/4" = 1'-0" 1" = 1'-0" 1 1/4" = 1'-0" 1 1/2" = 1'-0" 1 3/4" = 1'-0" 2" = 1'-0" 2 1/4" = 1'-0" 2 1/2" = 1'-0" 2 3/4" = 1'-0" 3" = 1'-0" 3 1/4" = 1'-0" 3 1/2" = 1'-0" 3 3/4" = 1'-0" 4" = 1'-0" 4 1/4" = 1'-0" 4 1/2" = 1'-0" 4 3/4" = 1'-0" 5" = 1'-0" 5 1/4" = 1'-0" 5 1/2" = 1'-0" 5 3/4" = 1'-0" 6" = 1'-0" 6 1/4" = 1'-0" 6 1/2" = 1'-0" 6 3/4" = 1'-0" 7" = 1'-0" 7 1/4" = 1'-0" 7 1/2" = 1'-0" 7 3/4" = 1'-0" 8" = 1'-0" 8 1/4" = 1'-0" 8 1/2" = 1'-0" 8 3/4" = 1'-0" 9" = 1'-0" 9 1/4" = 1'-0" 9 1/2" = 1'-0" 9 3/4" = 1'-0" 10" = 1'-0"

**E/38200**

**Site Photo**



**E/38200**

**Site Photo**





**E/38200**

**Site Photo**





**E/38200**

**Site Photo**





**E/38200**

**Site Photo**





**E/38200**

**Site Photo**





**E/38200**

**Site Photo**





**E/38200**

**Site Photo**



**E/38200**

**Site Photo**





**E/38200**

**Site Photo**





**E/38200**

**Site Photo**



**E/38200**

**Site Photo**





**E/38200**

**Site Photo**



**E/38200**

**Site Photo**





**E/38200**

**Site Photo**

