

***Y PWYLLGOR
CYNLLUNIO***

02 Mai 2019

***RHANBARTH Y
GORLLEWIN***

**PLANNING
COMMITTEE**

02 May 2019

**AREA
WEST**



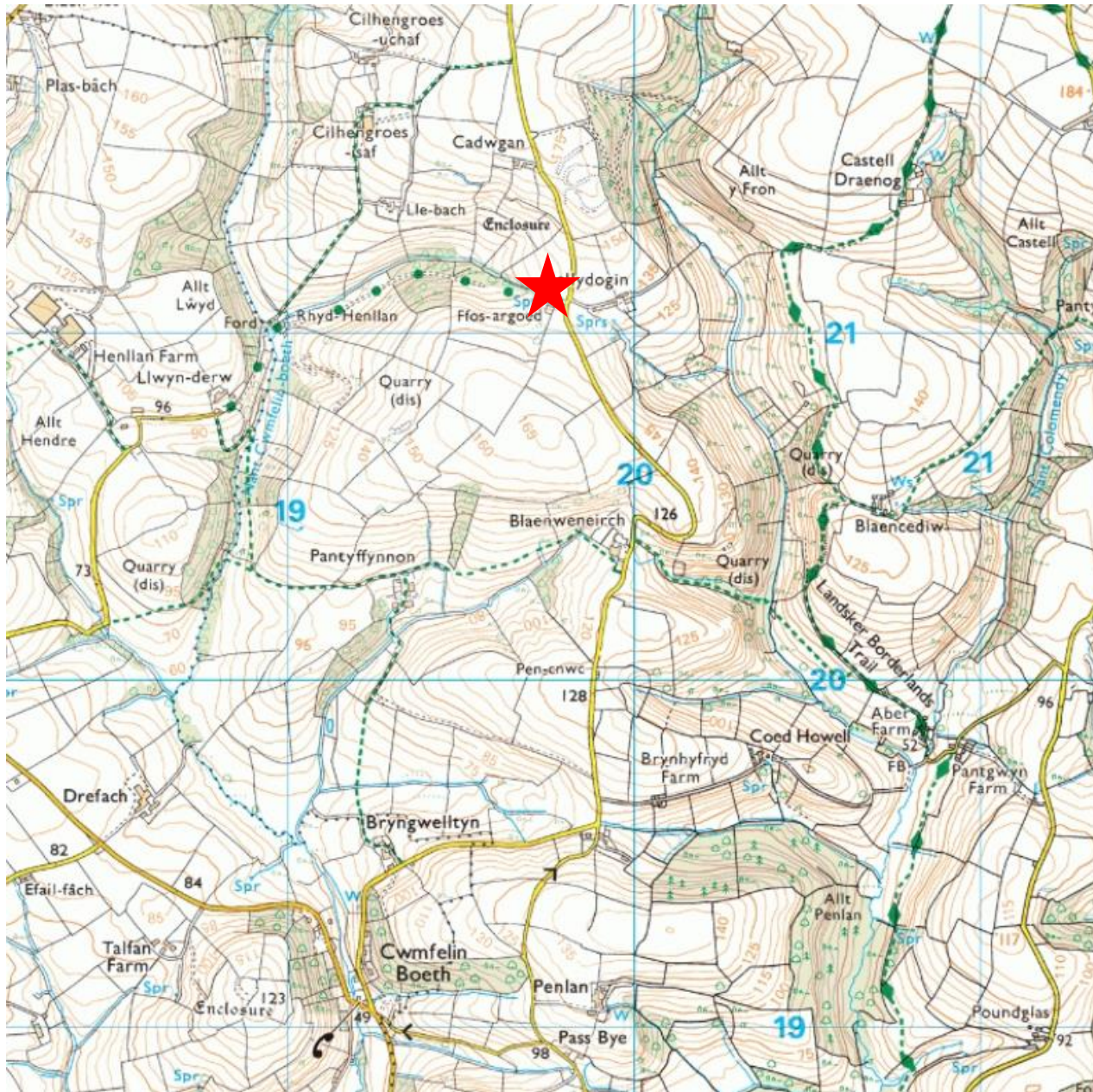
***CEISIADAU YR ARGYMHELLIR EU
BOD YN CAEL EU CYMERADWYO***

**APPLICATIONS RECOMMENDED
FOR APPROVAL**



W/37160

W/37160 Location Plan



W/37160 Site Location Plan



W/37160 Aerial History

1999-2001



2006



2009-2010

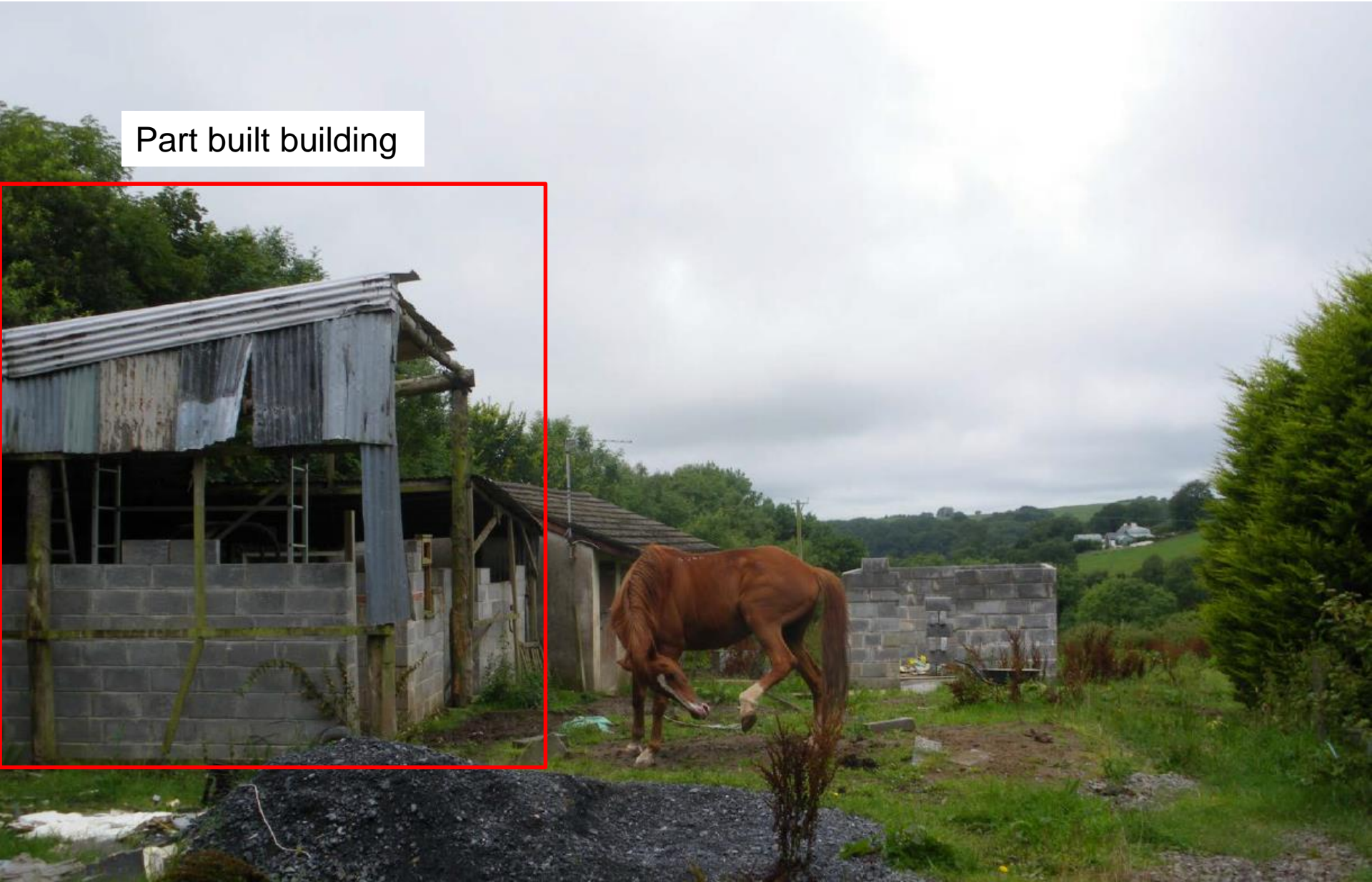


2013-2014



W/37160 August 2011

Part built building



W/3716 July 2018



W/3716 July 2018



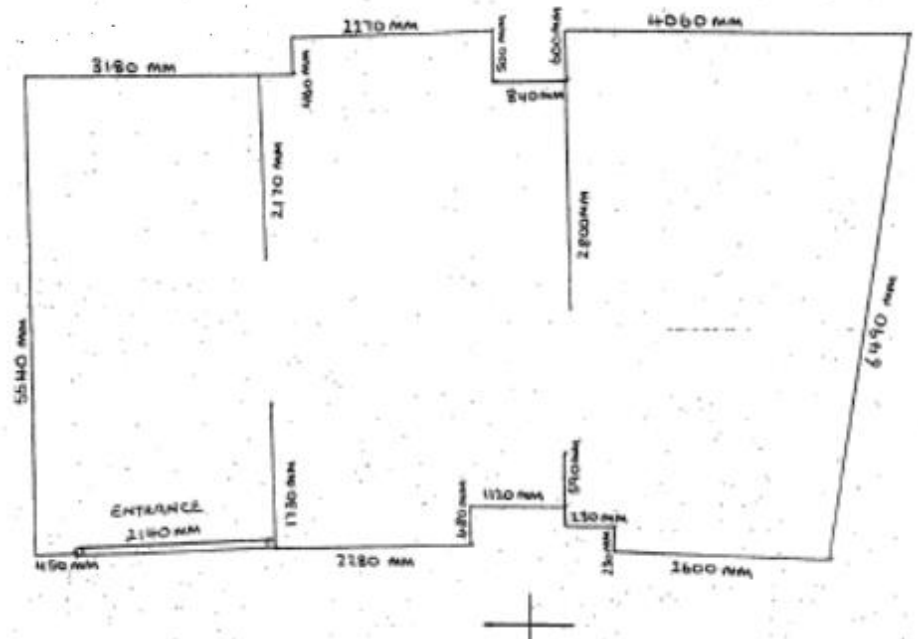
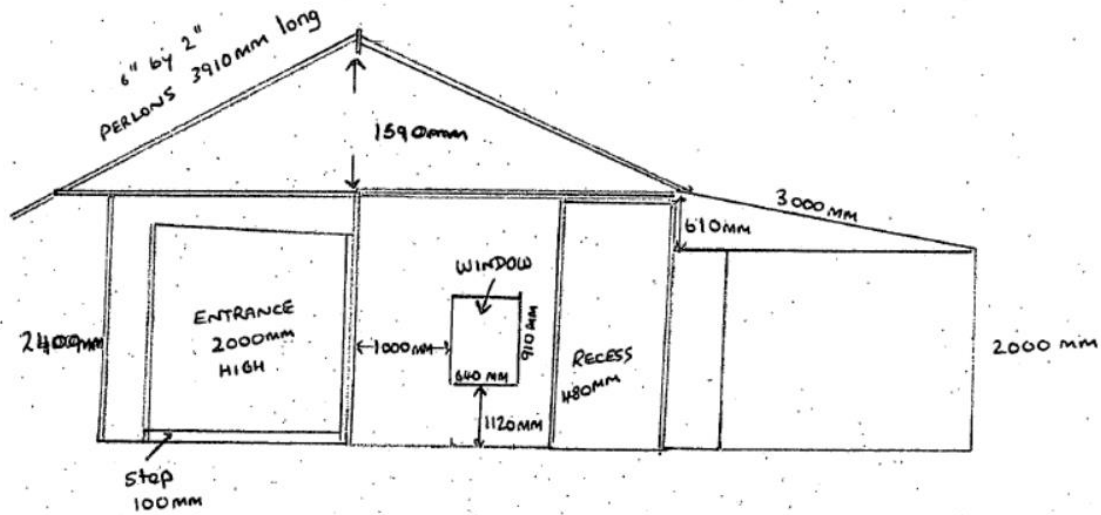
W/3716 July 2018



W/37160 July 2018



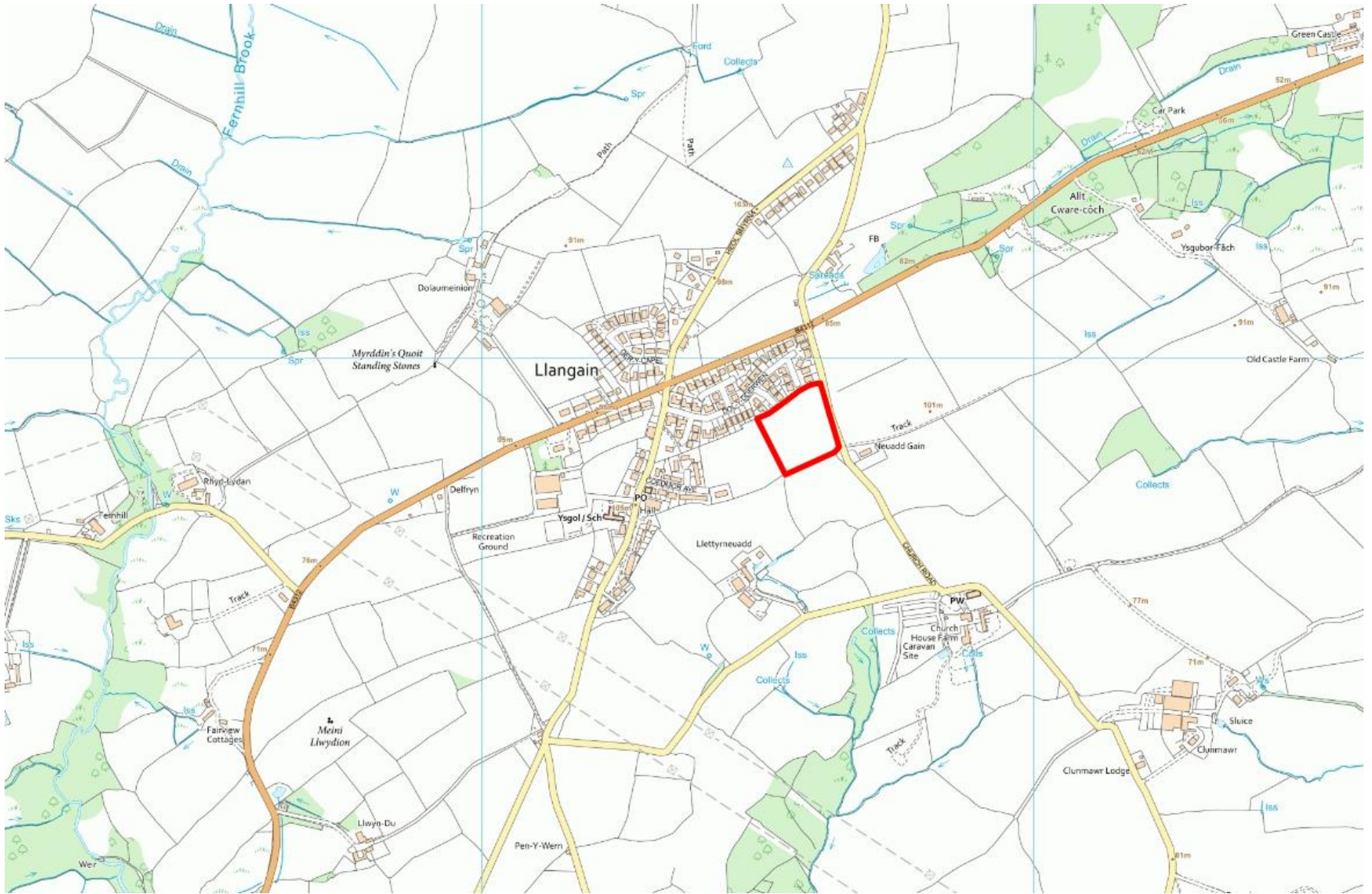
W/37160 Plans



W/38125

W/38125

Site Location Plan



W/38125

Site Location Plan



W/38125

Site Location Plan



W/38125

Site Location Plan



W/38125

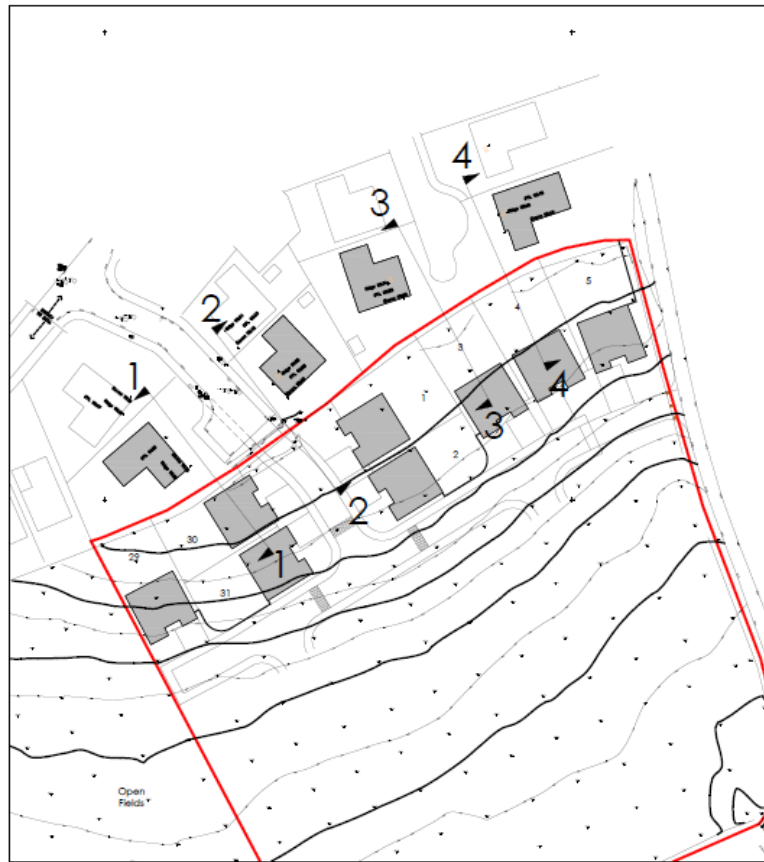
Illustrative Site Layout



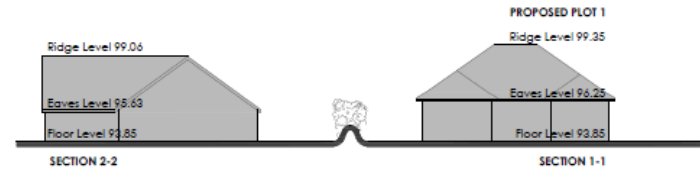
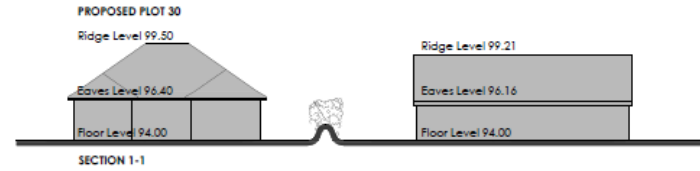
Open Market	
	4 Bedroom House
	4 Bedroom House
	4 Bedroom House
	3 Bedroom House
	3 Bedroom House
	Bungalow
Affordable Housing 30%	
	3 Bedroom House
	2 Bedroom House
	Affordable Housing Plots

W/38125

Illustrative Cross Sections



SITE LAYOUT - NTS



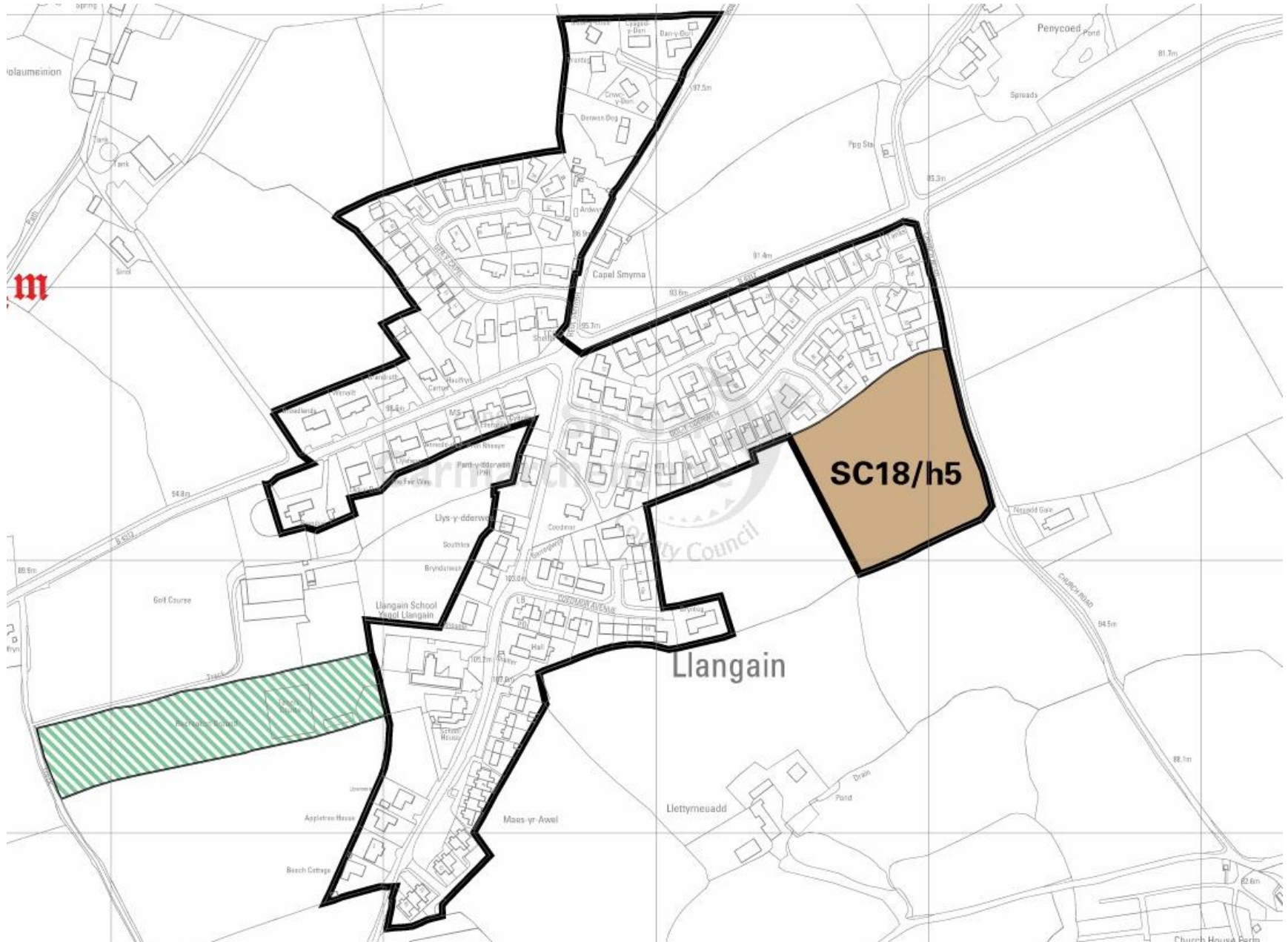
SITE SECTIONS 1:100

Revised	Date	Amendment	Initials
Development: LAND SOUTH OF DOL-Y-DDERWEN			
Location: LLANGAIN, CARMARTHEN.			
Client: REW TRUST			
Drawing Title: SITE SECTIONS			
Drawing Number: LLAN-15-04-20			
Revision: /	Scale @ No:	1:100	
Drawn By: PVCT/UL	Date Issued:	20.07.18	
Checked by:	Date:		



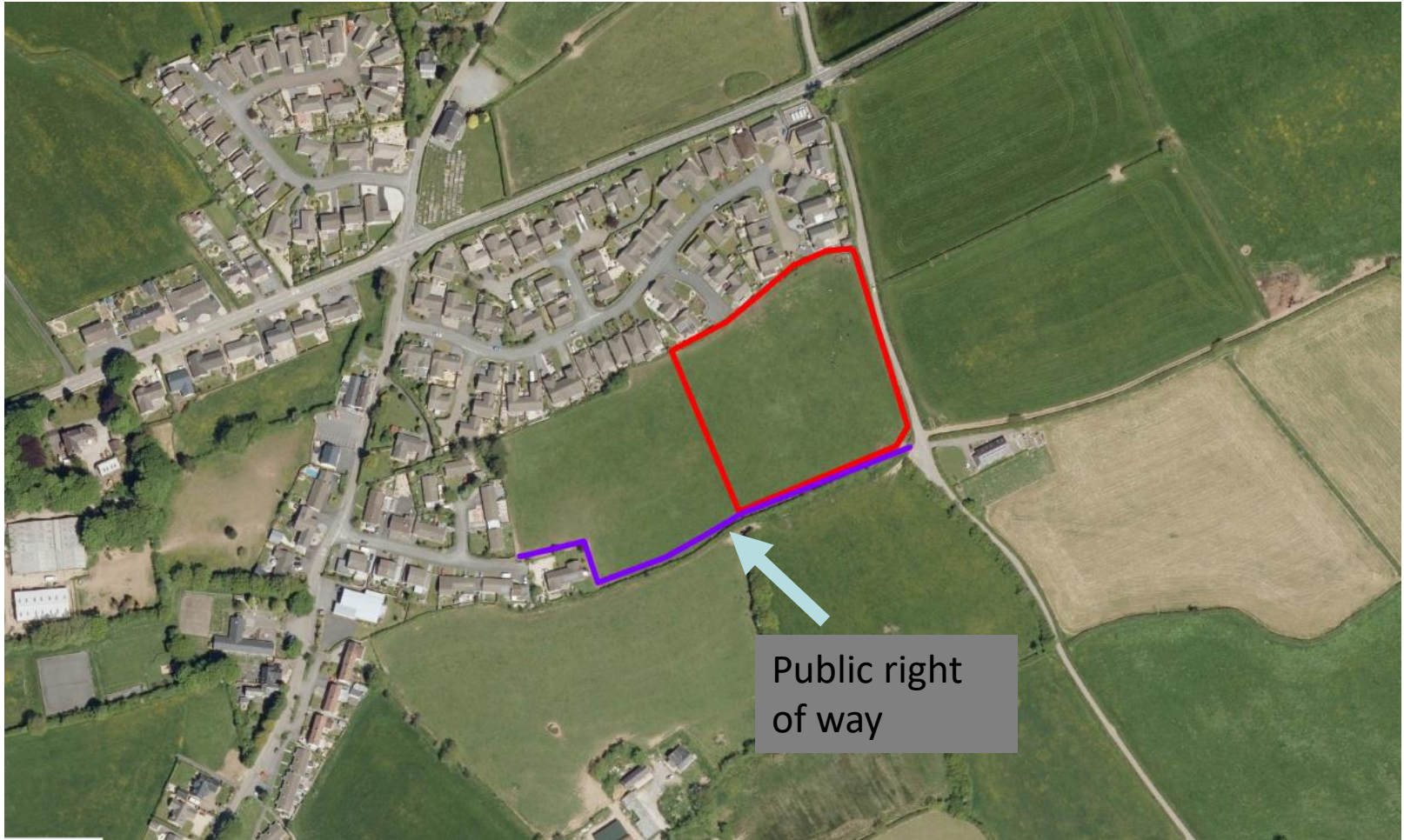
W/38125

LDP Proposals Map



W/38125

Location of public right of way



W/38125



W/38125



W/38125



W/38125



W/38125



W/38125



W/38125



W/38125



W/38125



W/38125



W/38125



W/38125

