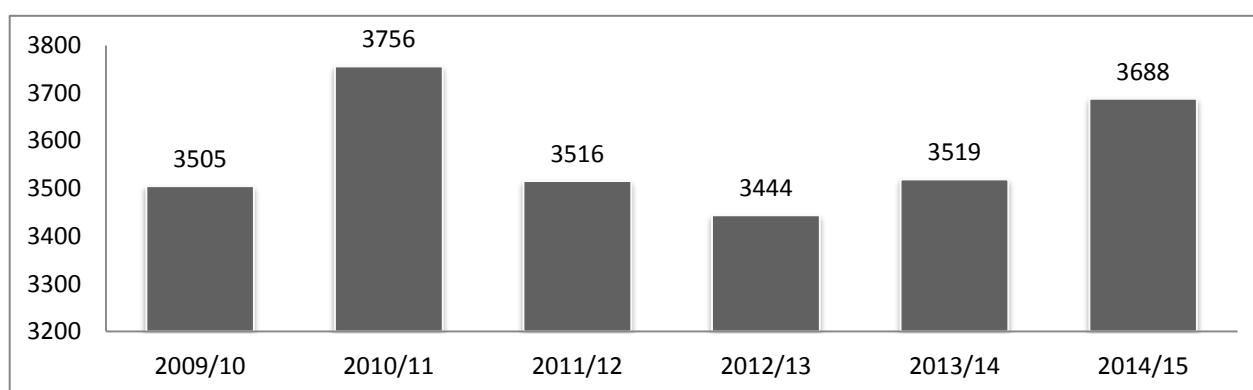


Provisional Examination and Teacher Assessment Results and provisional school attendance data

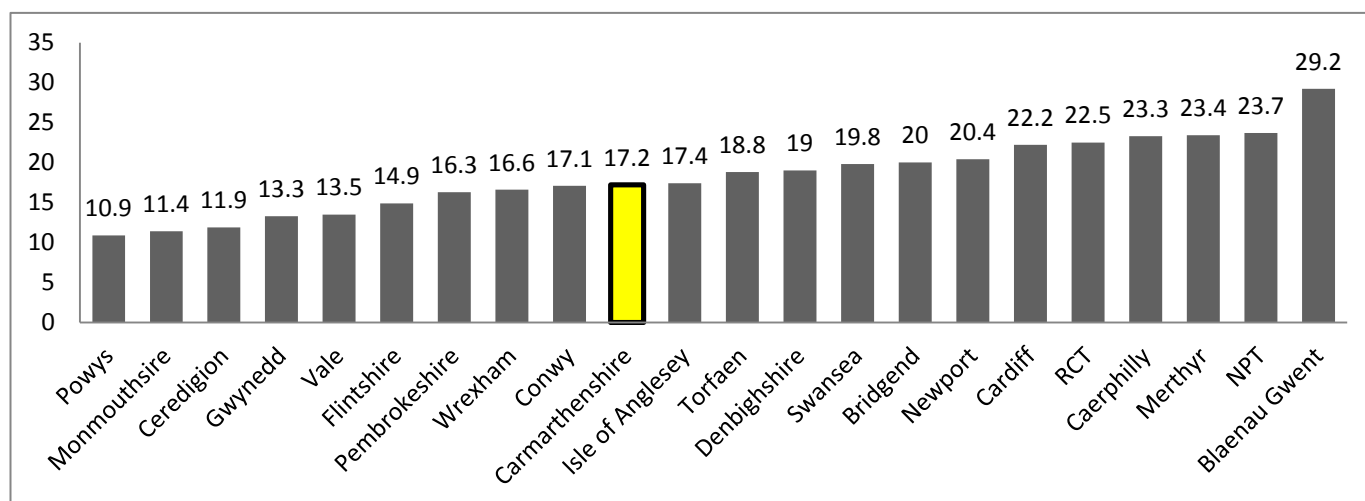
Officers usually present a finalised and verified performance data report to Members and other stakeholders as part of the January Annual Performance Report. Following comments from Members in respect of scrutinising performance data earlier in the school year it was agreed to present data in the September Scrutiny with the health warning that some data will be unverified.

Officers will present the data via a presentation and outline priorities and actions to respond to identified challenges. In addition this report will include some narrative on performance, comparisons with national and regional performance and possible areas to develop.

Context- Free School Meals Benchmarking



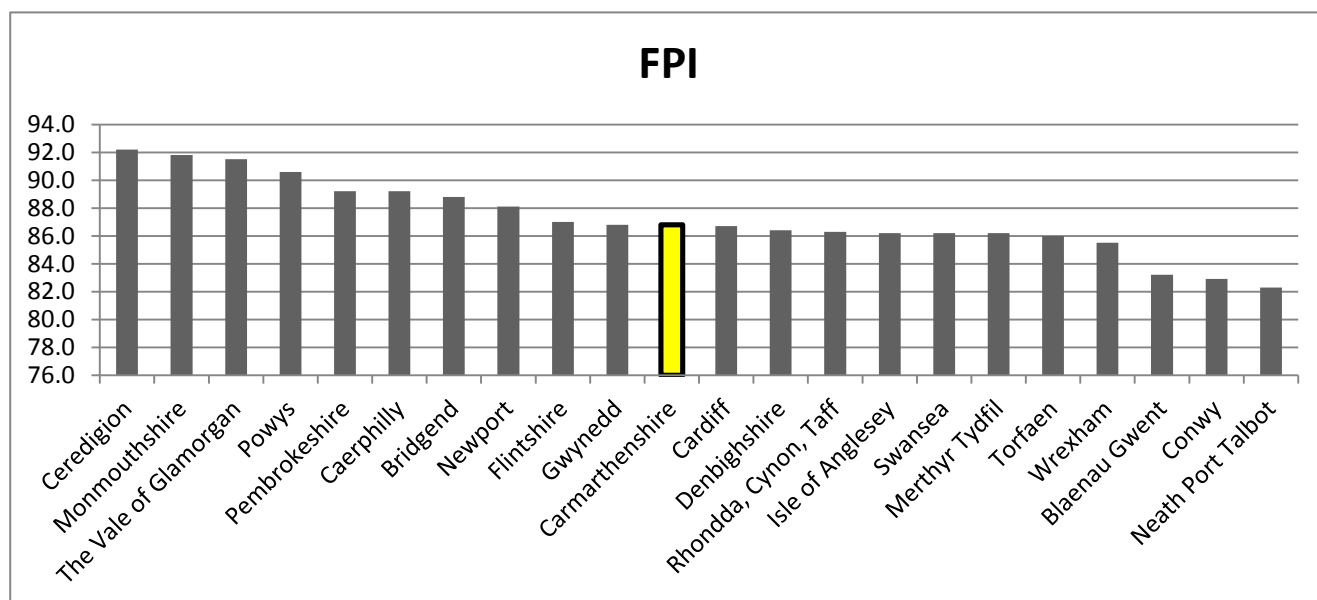
Over the last three years we have seen an increase in pupils eligible for free school meals. **17.2%** of Carmarthenshire's pupils aged 5-15 are currently entitled to free school meals. FSM levels in the Primary sector are 18.2% (Rank- 11th) and 15.7% (Rank- 10th) in the Secondary sector. The Welsh average is 18.8%.



When considering benchmarks we should be performing around the 10th position when considering our cohort.

Foundation Stage Teacher Assessment Results (*Outcomes 5+)

| | 2013 | 2014 | 2015 |
|---|------------------|-------------------|-------------------|
| Foundation Phase Outcome Indicator | 81.6 (16) | 84.1↑ (13) | 86.8↑(=10) |
| Welsh | 86.2 | 89.2 | 91.4↑ |
| English | 81.0 | 81.1 | 83.4↑ |
| Mathematics | 85.9 | 88.1 | 89.8↑ |
| Personal and Social Development | 93.0 | 94.0 | 95.2↑ |

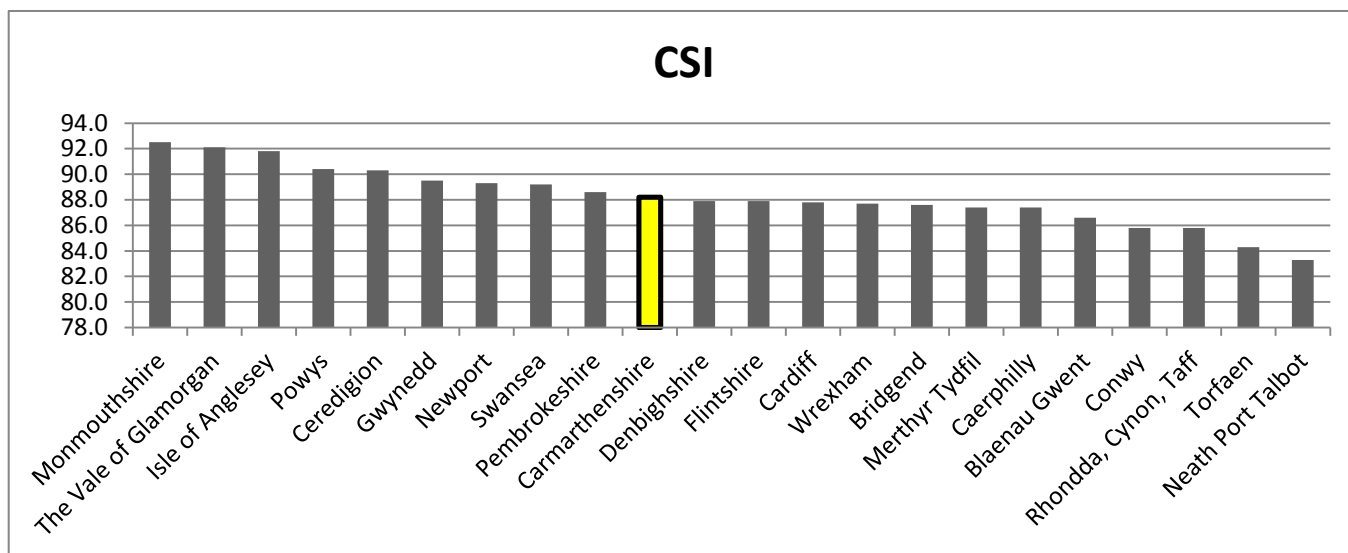


Commentary

- Continued improvement- Carmarthenshire's best Foundation Phase results.
- 2.7% improvement in Foundation Phase Outcome Indicator from last year
- Equal to Welsh average of 86.8% but slightly below ERW average of 87.1%
- Improved fsm ranking- above expected position
- ACTION- through ERW Challenge Adviser Core Visits continue to secure further improvements in core areas especially English.
- Schools/LA to share good practice identified in high performing schools.

Key Stage 2 Teacher Assessment Results (Level 4+ in Mathematics/Science/Language)

| | 2013 | 2014 | 2015 |
|---|------------------|-------------------|-------------------|
| Key Stage 2 Core Subject Indicator | 85.4 (10) | 87.4 ↑ (6) | 88.2↑ (10) |
| Welsh | 84.5 | 84.4 | 88.6↑ |
| English | 87.22 | 90 | 90 ⇄ |
| Mathematics | 88.1 | 89.7 | 90.4↑ |
| Science | 90.7 | 91.1 | 91.9↑ |

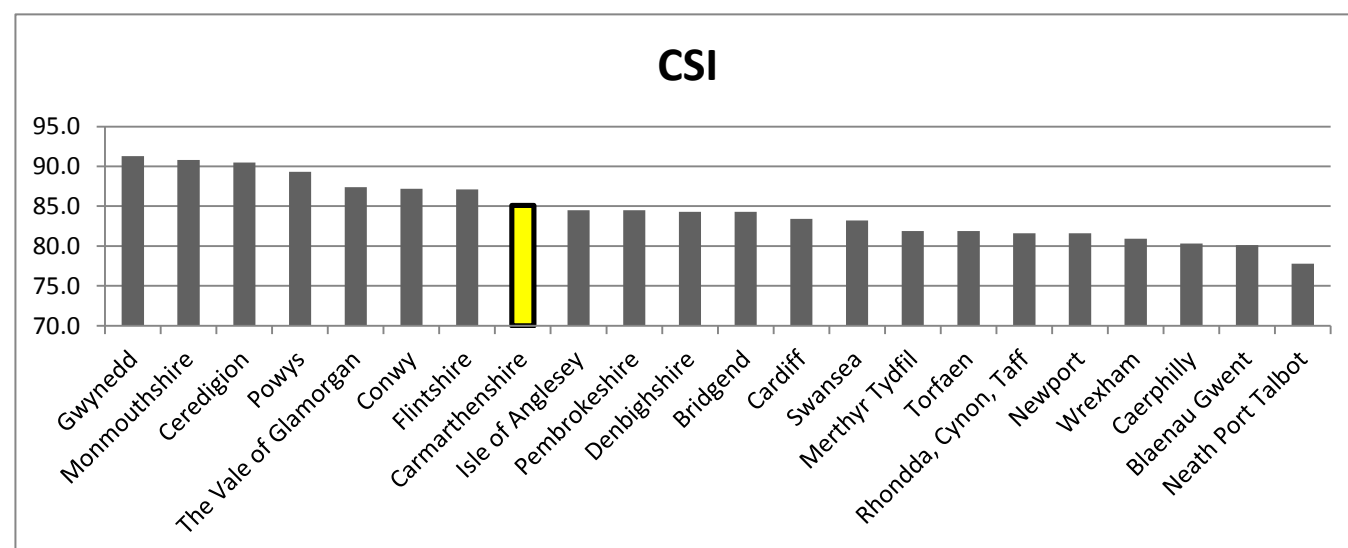


Commentary

- Continued improvement- Carmarthenshire's best Key Stage 2 results
- A further 0.8% improvement in Key Stage 2 Core Subject Indicator from last year
- Above Welsh average of 87.7% but slightly below ERW average of 88.3%
- fsm ranking above expected position
- ACTION- continue to secure further improvements in core areas.

Key Stage 3 Teacher Assessment Results (Level 5+ in Mathematics/ Science/ Language)

| | 2013 | 2014 | 2015 |
|---|------------------|-------------------|------------------|
| Key Stage 2 Core Subject Indicator | 77.1 (13) | 84.5 ↑ (3) | 85.1↑ (8) |
| Welsh | 83.6 | 88.7 ↑ | 86.5 ↓ |
| English | 83.1 | 88.5 ↑ | 88.4 ↓ |
| Mathematics | 83.8 | 88.4 ↑ | 90.4↑ |
| Science | 86.2 | 91.1 ↑ | 91.9↑ |
| Welsh Second Language | 70.64 | 77.65 ↑ | |



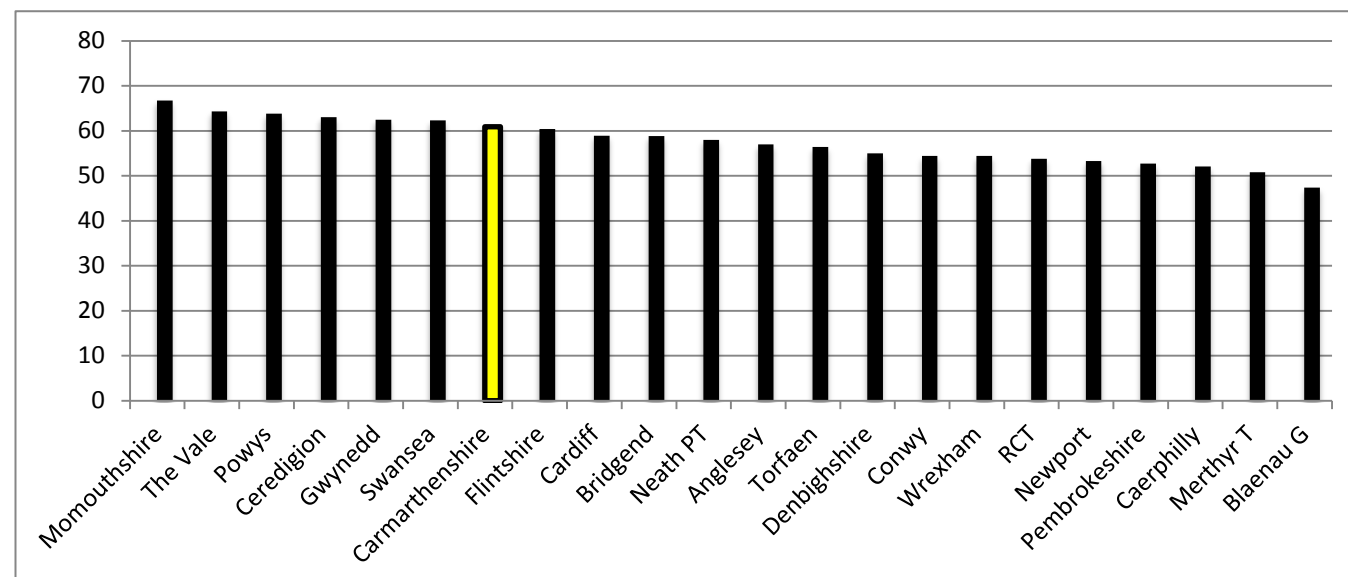
Commentary

- Continued improvement- Carmarthenshire's best Key Stage 3 results
- Above Welsh average of 83.9% and ERW average of 84.3%
- fsm ranking- above expected position
- ACTION- through ERW Challenge Adviser Core Visits continue to secure further improvements in core areas especially Welsh.
- Schools/LA to share good practice identified in high performing schools.

GCSE Results-

| | 2013 | 2014 | 2015* |
|--|------------------|-----------------|-------------------|
| Level 1 (5 GCSE passes) | 94.8 | 95.7 | 95.2 ↓ |
| Level 2 (5 GCSE passes at grade A*-C) | 78 | 84.7 | 86.3 ↑ |
| Level 2 Inclusive (5 GCSE passes at grade A*-C including A8-C in Welsh First language or English and Mathematics) | 53.9 (11) | 58.7 (8) | 60.9 ↑ (7) |

*unverified results



Commentary

- Continued improvement- Carmarthenshire's best Level 2i results
- Improved fsm ranking- above expected position
- ACTION- through Challenge Adviser Core Visits provide detailed feedback to all schools on areas to develop/improve.
- Schools/LA to share good practice identified in high performing schools.

A Level Results

| | 2013 | 2014 | 2015* |
|--|----------|----------|-------|
| Level 3 (2 A Levels at grade A-E) | 97.3 (8) | 98.6 (5) | |
| A* | 4 | 5.6 | 5 |
| A*-A | 23.5 | 23.7 | 21.9 |
| A*-C | 81 | 81 | 81 |
| A*-E | 98.6 | 99.4 | 98.4 |

Commentary

- Continued high performance at A levels
- ACTION- work with schools on increasing A*/A grades achieved.
- Schools/LA to share good practice identified in high performing schools.

Literacy and Numeracy 2015 Test Results

NATIONAL READING TEST ENGLISH

| | Disapplied | Absent | Less than 85 | Between 85 and 115 | Greater than 115 | Above 85 | Rank |
|------------------------|------------|------------|--------------|--------------------|------------------|-------------|------------|
| 2015 WALES | 1.8 | 1.3 | 13.4 | 67 | 16.6 | 83.6 | |
| 2015 Carmarthen | 1.6 | 0.9 | 12.3 | 68.2 | 16.9 | 85.1 | <i>7th</i> |
| 2014 Carmarthen | 1.9 | 1.8 | 12.1 | 67.5 | 16.7 | 84.2 | <i>9th</i> |
| 2013 Carmarthen | 1.5 | 1.6 | 12.7 | 68.2 | 16.0 | 84.2 | <i>8th</i> |

NATIONAL READING TEST WELSH

| | Disapplied | Absent | Less than 85 | Between 85 and 115 | Greater than 115 | Above 85 | Rank |
|------------------------|------------|------------|--------------|--------------------|------------------|-------------|-------------|
| 2015 WALES | 0.7 | 0.9 | 13.8 | 67.5 | 17.1 | 84.6 | - |
| 2015 Carmarthen | 1.1 | 0.7 | 14.0 | 66.1 | 18.2 | 84.3 | <i>12th</i> |
| 2014 Carmarthen | 1.3 | 1.3 | 12.8 | 67.4 | 17.2 | 84.6 | <i>12th</i> |
| 2013 Carmarthen | 1.2 | 1.6 | 14.4 | 65.9 | 16.9 | 82.8 | <i>12th</i> |

NATIONAL NUMERACY TEST- PROCEDURAL COMPONENT

| | Disapplied | Absent | Less than 85 | Between 85 and 115 | Greater than 115 | Above 85 | Rank |
|------------------------|------------|------------|--------------|--------------------|------------------|-------------|------------|
| 2015 WALES | 1.6 | 1.2 | 12.9 | 68.2 | 16 | 84.2 | - |
| 2015 Carmarthen | 1.4 | 0.9 | 9.9 | 68.7 | 19 | 87.7 | <i>3rd</i> |
| 2014 Carmarthen | 1.5 | 1.4 | 10.6 | 68.5 | 18 | 86.5 | <i>5th</i> |
| 2013 Carmarthen | 1.6 | 1.5 | 11.3 | 68.2 | 17.5 | 85.7 | <i>6th</i> |

NATIONAL NUMERACY TEST- REASONING COMPONENT

| | Disapplied | Absent | Less than 85 | Between 85 and 115 | Greater than 115 | Above 85 | Rank |
|------------------------|------------|------------|--------------|--------------------|------------------|-----------|------------|
| 2015 WALES | 1.6 | 1.7 | 11 | 68.8 | 16.8 | 85.6 | - |
| 2015 Carmarthen | 1.4 | 1.2 | 8.4 | 68.9 | 20.1 | 89 | <i>5th</i> |
| 2014 Carmarthen | 1.6 | 2.1 | 10.8 | 67.9 | 14.8 | 82.7 | <i>7th</i> |

Commentary

- Overall very positive outcomes for Carmarthenshire's learners
- Need to focus on increasing the number of pupils securing above average scores.
- Need further analysis of the scores for Welsh and compare ourselves with similar authorities in respect to provision through the medium of Welsh
- Schools/LA to share good practice identified in high performing schools.

PRIORITIES FOR 2015/16

- 1. Performance of e-fsm learners**
- 2. Performance of more able and talented learners**
- 3. Performance at the Foundation Phase**

Primary and Secondary Schools Attendance rates- 3 year comparison (2012-2015)

Our schools, in partnership with parents the Education Welfare Service and Local Authority, have achieved the best ever school attendance rates in both primary and secondary schools.

Primary

| | 2012-13 | 2013-14 | 2014-15 (Provisional results- Return to WG 15/09/15) |
|----------------------|---------|---------|--|
| Present | 93.5 | 95.0 | 95.1 |
| Authorised | 6.1 | 4.3 | 4.0 |
| Unauthorised | 0.4 | 0.7 | 0.8 |
| Welsh Average | 93.7 | 94.8 | <i>Comparable data published Dec 2015</i> |
| Rank | 15th | 6th | <i>Comparable data published Dec 2015</i> |

Secondary

| | 2012-13 | 2013-14 | 2014-15 |
|----------------------|---------|---------|---|
| Present | 92.0 | 93.9 | 94.2 |
| Authorised | 7.6 | 5.6 | 5.1 |
| Unauthorised | 0.4 | 0.5 | 0.7 |
| Welsh Average | 92.6 | 93.6 | <i>Comparable data published Nov 2015</i> |
| Rank | 19th | 7th | <i>Comparable data published Nov 2015</i> |

Commentary

- *Continue to focus on improving attendance and reducing absences.*
- *EWS to focus on learners with attendance is below 85% using a person centred planning and/or Team Around the Family approach.*
- *Schools/LA to share good practice identified in high performing schools.*